

Plixer Replicator

○ Reduce Infrastructure Resources

- Forward, duplicate, and load balance data for analysis
- Protect the CPUs of the infrastructure
- Greater flexibility to use infrastructure data

○ Future-Proof Configuration

- Configuring new devices is a one-time effort
- Improved productivity
- Easy to add new devices as needed

○ Ensure Data Integrity

- Thwart bad actors trying to cover their tracks
- Ability to back up system messages to multiple locations



Organizations of all sizes are actively striving to leverage data intelligence so they can make better business decisions and protect themselves against security threats. Much of this data currently exists within their existing network infrastructure, but exporting it to all the places, products, and tools where it delivers value can be a challenge. Plixer Replicator is an important piece of the puzzle to ensure that every organization can make the best use of their network traffic flows and metadata.

With Plixer Replicator you can streamline network flow data from hundreds or even thousands of devices, duplicate the data, and forward it to new destinations without modifying the original source IP address. Doing so allows you to:

- Send the same data to both network and security tools for analysis
- Reduce traffic on the network and load on routers and switches
- Lessen your configuration complexity
- Provide redundancy by sending UDP datagrams to multiple destinations simultaneously, including cloud-based sites

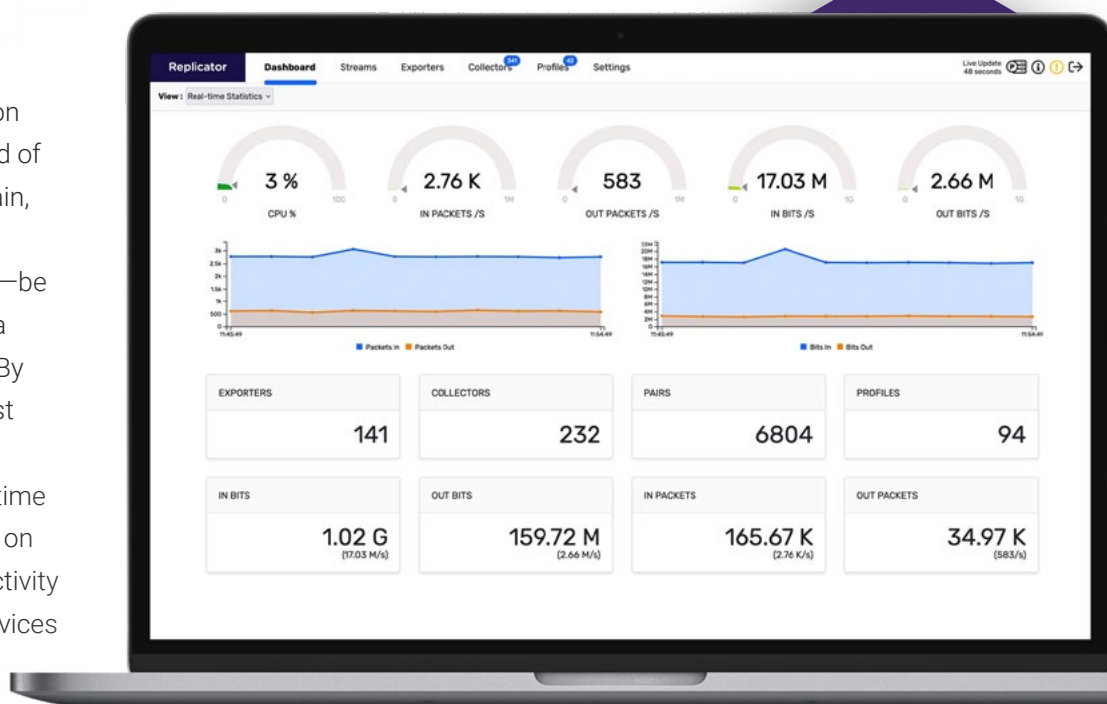
Duplicating the UDP streams through a single appliance allows you to easily balance traffic loads and provide fault tolerance. Simultaneously, you can send network flow data collected by the device to multiple analysis tools to increase security, performance, and business intelligence.

For example, by using Plixer Replicator, you can allow your firewall to use its compute power for firewall activities and maximize the metadata collected by the firewall to improve network security by forwarding the data to multiple tools. And this advantage extends to any network device, whether you plan to use the network flow data for performance, security, or business intelligence.

The highly flexible Plixer Replicator also gives companies with compliance requirements a way to back up system messages and notifications to multiple locations so when an audit takes place, they can be certain they have the data.

Improve resiliency and configuration scalability

Security and network teams regularly introduce new products and tools into their environment. With Plixer Replicator, new device configuration becomes a one-time effort. Instead of touching every network device again, simply update Plixer Replicator to forward data wherever you want it—be it to a SIEM, flow collector, big data platform, or analytics application. By leveraging Plixer Replicator's robust forwarding capabilities, IT teams significantly reduce configuration time as new data sources are deployed on the network. This improves productivity and makes it easier to add new devices as needed.



Prevent cybercriminal obfuscation

As a proactive effort to thwart cybercriminals in their attempt to delete data and cover their tracks, Plixer Replicator sends data to many distinct locations. As a transparent “bump-in-the-wire,” Plixer Replicator does not store information, but rather transparently collects, duplicates, and forwards it to disparate locations. By distributing millions of flow and metadata records to various products and locations, it becomes difficult for bad actors to hack all your destination systems and cover their tracks.

Gain business intelligence

Because Plixer Replicator can collect and forward any UDP data to another device or analysis solution, the use for that data goes beyond network or security intelligence. You can send device performance, communication, location, or event data to any source that you might benefit from having that data analyzed. Additionally, you could use data from one device to inform action on another device. For instance, you might need to send performance data about one device to another to reduce the over-production of devices or predict when machines will need repair. Or if you have autonomous devices, sending GPS data from one device to the other can prevent these devices from colliding.

Easy to use, easy to manage, and easy to configure

Plixer Replicator offers an easy to manage and deploy web interface while still maintaining the power of a command line. Available as either a virtual or a physical appliance, Plixer Replicator sits between UDP metadata-exporting devices (switches, routers, firewalls, etc.) and the products that collect that data—such as Plixer Core or Plixer Enterprise.

Plixer Replicator can duplicate and distribute any UDP datagram and keep the original source IP address, which is important because you want the collector to believe it is receiving the flows directly from the original device exporting the network flow data. If the collector needs to reach out to the exporter, it will query the original source IP address and not the flow replicator.

Additionally, you can deploy multiple Plixer Replicators for failover redundancy/high availability, and customization is available through a RESTful API.

Virtual appliance options

Plixer Replicator is offered as a virtual appliance for customers wishing to deploy in an on-premise hypervisor. System specifications are dependent on a number of factors. Please reach out to your account representative for recommendations on proper hardware sizing and configuration.

Hardware appliance options

Plixer Replicator is also available as a stand-alone hardware appliance that can be deployed in a customer's datacenter.

See “hardware appliance specifications” below for configuration details and speak with your account representative for information on custom requirements including increased storage options. FQDN forwarded by your DNS server and store your stolen information for later resale on the black market.

Subscription license

Plixer Replicator can be purchased as a subscription license.

Subscription licensing allows the purchase of Plixer Replicator in annual contracts. Users are free to use the software as long as they maintain a contract with Plixer.

Product updates and customer support are included as part of the subscription. The subscription licensing has an ongoing Customer Service Contract as part of the terms of your license.

Ordering information

Ordering subscription licenses of the Plixer Replicator software is based on the replication rate that each Replicator is receiving.

Warranty

As a customer-centric company, Plixer is committed to providing quality products and solutions. If one of our products fails due to a defect, we have developed a comprehensive warranty that protects you and provides a simple way to get your product repaired or media replaced as soon as possible.

The hardware appliance comes with a 3-year warranty against manufacturing defects. Software warranties are covered through the Customer Support Contract or through a subscription contract.

Service and support

Plixer Support services are available to all customers with an active maintenance or subscription contract. Access our support team by phone +1 (207) 324-8805, web or our Customer Portal is available 24 hours a day, every day of the week.

Additional information

For additional technical information, please visit: <https://www.plixer.com/products/replicator/>

	1GBE REPLICATOR	10GBE REPLICATOR
Chassis configuration	1U Chassis	
Processor	Intel® Xeon® E-2314 2.8GHz, 8M Cache, 4C/4T	
Memory	1 x 8GB UDIMM, 3200MT/s, ECC	
Storage	2 x 600GB (RAID 1)	
Networking standard	1 x RJ-45 Mgmt LAN port, Broadcom 5720 Dual Port 1Gb, Broadcom 57412 Dual Port 10GbE SFP+	1 x RJ-45 Mgmt LAN port, Broadcom 57412 Dual Port 10GbE SFP+, 5720 Dual Port 1GbE BASE-T rNDC
Replication rate	Engine capable of 82,000 packets per second (pps) and 82,000 pps output	
Hardware warranty	3 years (36 months)	
Power supply	Dual, Hot-Plug, Redundant Power Supply (1+1), 600W	
Management port	Yes	
Weight	29.98 lb (13.6 kg)	
Dimensions	23.45" x 17.08" x 1.68" (59.56cm x 43.40cm x 4.28cm)	
Environmental	Storage: Temperature: -40°C to 65°C (-40°F to 149°F) Humidity: 5% to 95% Operating: Temperature: 10°C to 35°C (50°F to 95°F) Humidity: 10% to 80%	
Compliance	US CFR Title 47, FCC Part 2, 15 ANSI C63 2009 Canadian ICES-3(A)/NMB-3(A), Issue 5 UL 60950-1 UL 60950-1 (Information Technology Equipment - Safety - Part 1: General Requirements) CSA C22.2 No. 60950-1-07 (Information Technology Equipment - Safety - Part 1: General Requirements) IEC 60950-1 (ed.2);am1	



plixer.com



sales@plixer.com

©Plixer, LLC. All rights reserved. Plixer and Scrutinizer are trademarks of Plixer. All other brand names are trademarks or registered trademarks of their respective companies.

The content in this document is for informational purposes only and is subject to change by Plixer, LLC without notice. While reasonable efforts have been made in the preparation of this publication to ensure its accuracy, Plixer, LLC assumes no liability resulting from technical or editorial errors or omissions, or for any damages resulting from the use of this information. Unless specifically included in a written agreement with Plixer, Plixer, LLC has no obligation to develop or deliver any future release or upgrade or any feature, enhancement, or function.

ds-3001.2-0523